



Omni

# APOGEE 3500

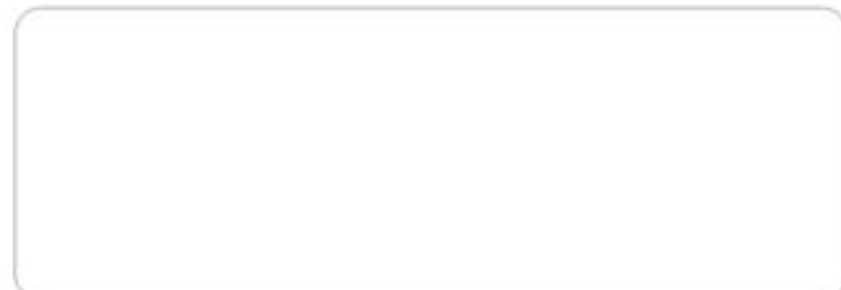
Digital Color Doppler Ultrasound Imaging System

- Phase Inversion Harmonic Imaging
- Speckle Reduction Technology
- Color Enhanced Technology
- Extended Pulse Imaging
- Touch Screen Control
- Live 3D Imaging

# SIUI

SHANTOU INSTITUTE OF ULTRASONIC INSTRUMENTS CO., LTD.

Add: #77, Jinsha Road, Shantou 515041, Guangdong, China  
Tel: +86-754-88250150 Fax: +86-754-88251499  
E-mail: siui@siui.com Website: <http://www.siui.com>



# SIUI

Specifications and appearance are subject to change without prior notice.  
DCY2-782 EN Apogee3500Omni\_CV/3A01



**Omni**  
**APOGEE 3500**  
 Digital Color Doppler Ultrasound Imaging System

Complete ultrasound solution beyond your expectation, but within your budget.

SIUI now presents an up-to-date total ultrasound solution – Apogee 3500 Omni, to maximize your ultrasound investment & bring you comprehensive utilities for clinical ultrasound diagnosis.

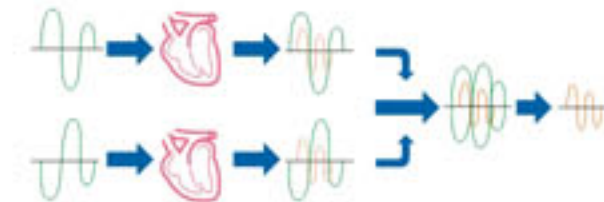
Driven by the innovative signaling technique & powerful ultrasound processing platform, the Apogee 3500 Omni excites clinical practitioners with its crystal-clear imaging, versatile applications and streamlined workflow.

## Innovative Technologies

Evolved from the digital beam former, the Apogee 3500 Omni incorporates leading ultrasound imaging technologies such as tissue harmonic imaging, extended pulse imaging, and adaptive speckle reduction, featuring imaging modes like B mode (2/2B/4B), M mode, color Doppler, color power Doppler, directional power Doppler, pulsed wave Doppler, continuous wave Doppler, trapezoidal imaging, extended sector imaging and live 3D imaging.

### Phase Inversion Harmonic Imaging (PIHI)

Riding over the general harmonic imaging frequency band limitation, PIHI enhances harmonic wave signals to obtain purified tissue harmonic imaging, resulting in crystal clear tissue harmonic imaging.



### Extended Pulse Imaging (EPI)

EPI increases information in echo signals to achieve in-depth detection, and improve image penetration & contrast. This brings significant benefit to scan difficult patients.

### Color Enhanced Technology

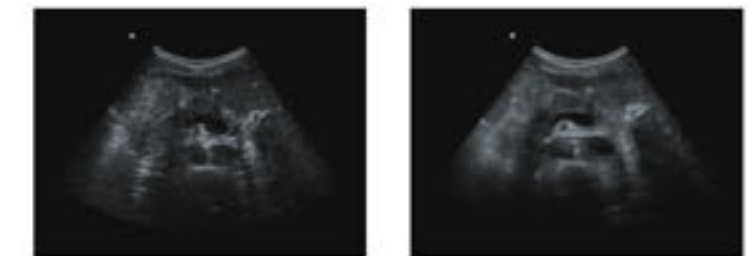
The system dynamically traces & captures subtle frequency shift signals of red cells, magnifies and enhances them, so as to improve flow sensitivity significantly.

### Directional Power Doppler

Combined with advantages of color Doppler and power Doppler, the system may detect flow at low speed, and identify flow direction & velocity.

### Speckle Reduction Technology (SRT)

The system will auto track, identify and intensify useful tissue-characteristic information. Meanwhile, noise is filtered to increase S/N ratio, enabling clear tissue boundary and enhanced image gradation, which is easy for distinguishing early-stage lesion tissues.



Before applying SRT

After applying SRT

### Maximum Color Saturation

Color sensitivity and color saturation are improved effectively, and flow saturation is increased.

### Color Noise Suppression

Based on max. color saturation, effectively filter color noise, resulting in purified color Doppler images.

### Real-time Triplex

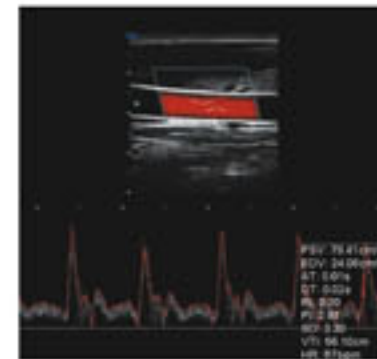
2D images, color images and spectrum images can be displayed synchronously in real time, a facility for easy comparison, analysis and accurate sampling.

# Versatile Functionality



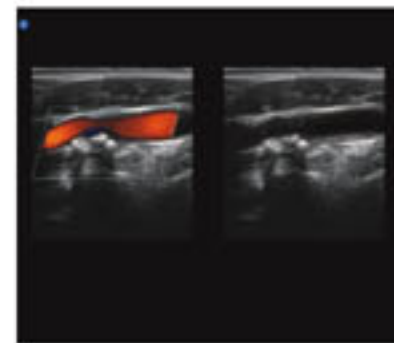
## Spectrum Envelope

PW and CW modes are available. Sonographers may choose fully automatic real-time spectrum envelope, manual envelope, or auto envelope by selecting the start point. Hemodynamic data, such as PSV and EDV, will be analyzed and displayed automatically.



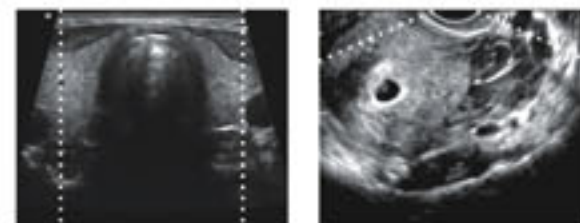
## Split B/Color Mode

2D and color images can be observed respectively and precise diagnosis through comparison is realized.



## Trapezoidal Imaging / Extended Sector Imaging

The extended field of view displays more image information without sacrificing image quality, a convenient approach especially for scanning big-size organs.



## Powerful Document Management System

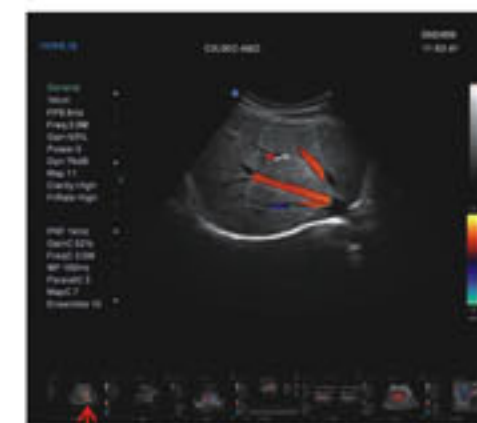
- Large Capacity Hard Drive DVD-RW
- S-Video Out USB Port
- VGA Port Network Port

## Personalized Function

Exam types/modes can be self-defined and image parameters based on personal preferences can be set to practice habits, so as to achieve personalized operation and improve diagnostic efficiency.

## Thumbnail View

The thumbnails of the currently saved diagnostic images are retained at the bottom of the screen, which can be recalled for comparison and analysis any time.



All-in-One Thumbnail View

## Touch Screen Control

By operating the color touch screen, sonographers may fully understand the current operation flow at glance and achieve their exams quickly.



## Task Indicator

Console buttons light up according to different task context, prompting the current available functions.



## Keyboard Drawer

Drawer-designed keyboard to facilitate input of alphanumeric information.



## Live 3D Imaging

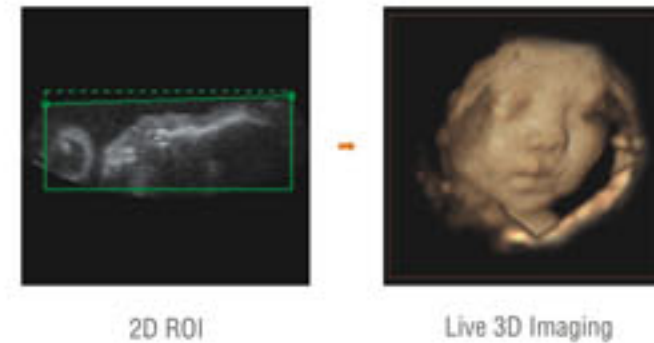
### Leading Volume Probe Technology

The Apogee 3500 Omni presents a high density volume probe to maximize live 3D ultrasound imaging. The compact design of the probe meets user's habit to manipulate a 2D probe, as a result diagnostic efficiency is improved.



### Simplified and Quick Operation

Unlike complicated operation in traditional live 3D ultrasound imaging, the Apogee 3500 Omni adopts simplified and quick operation method. Just with a few simple steps, live 3D ultrasound images can be obtained without effort.

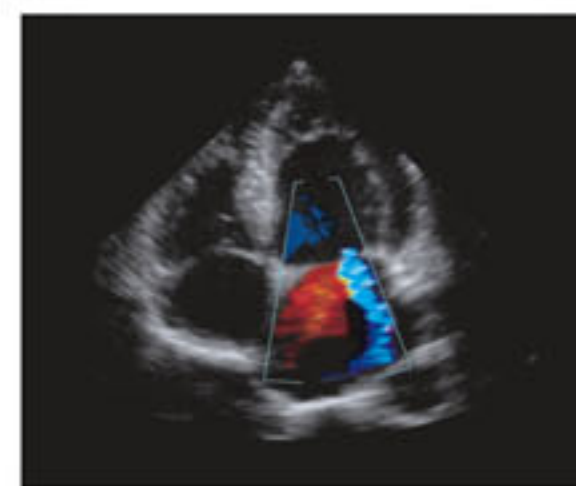
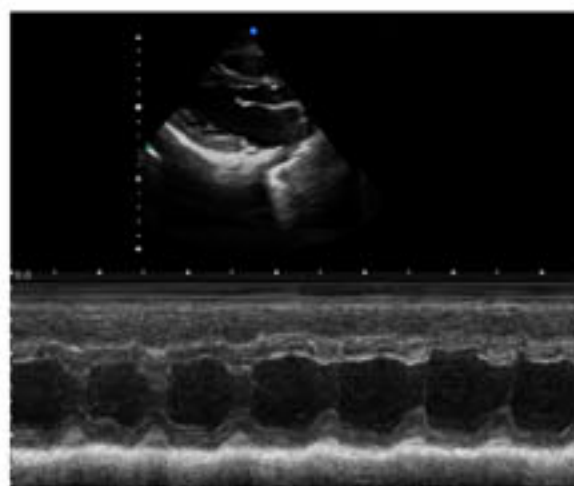


2D ROI

Live 3D Imaging

## Gateway to Cardiac Diagnosis

The Apogee 3500 Omni extends the ultrasound value to the maximum with the inclusion of phased array probe & CW Doppler. Built on a refined ultrasound processing platform, the system is tuned to meet your diagnostic demand on cardiology.

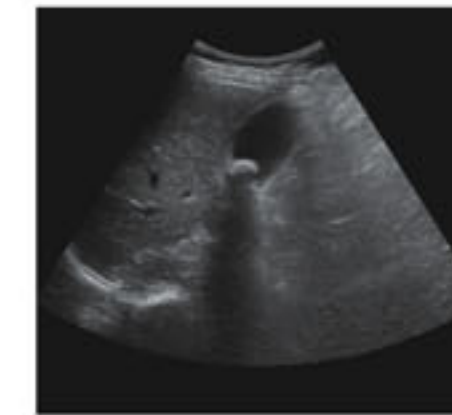


## Extensive Clinical Applications

With image processing technologies and measurement & calculation functions for various clinical applications, the Apogee 3500 Omni can be widely used in abdomen, vascular, breast, OB/GYN, superficial structure, musculoskeletal, urology, cardiology, pediatrics/neonates and small parts.



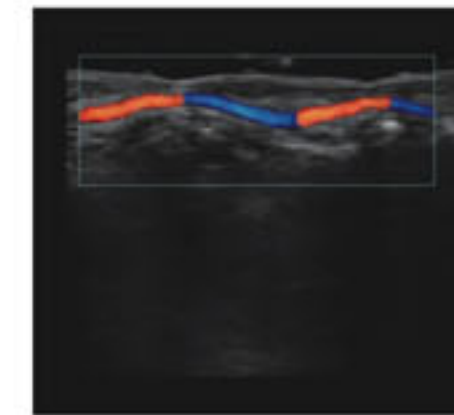
Adenoma



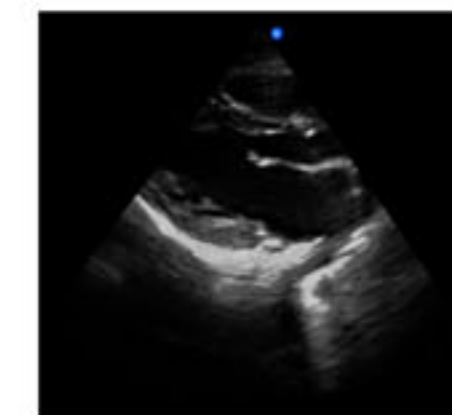
Cholecystolithiasis



Kidney



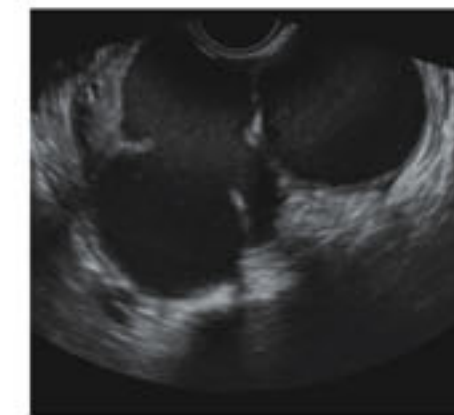
Finger Artery



Heart



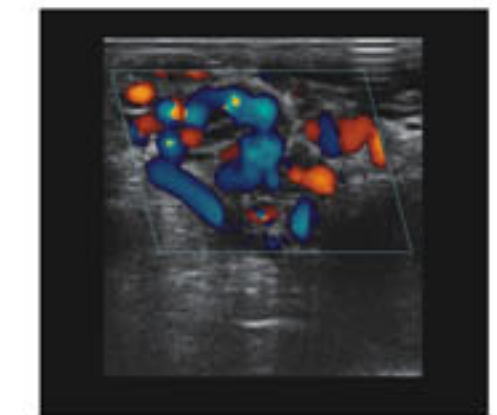
Fetal Face



Ovary Cyst



Ovary



Varicocele